

POLICYLAB

Our care for children and families drives our research, informing practice and policy to improve child health.

policylab.chop.edu



Founded in 2008, PolicyLab is a Center of Emphasis within Children's Hospital of Philadelphia's (CHOP) Research Institute, one of the largest pediatric research institutes in the country.

We develop and implement evidence-based solutions that are responsive to community needs and relevant to child health policy priorities. Collaboration with practitioners, families and policymakers is imperative throughout our research process because we know we cannot achieve improved child and adolescent health outcomes by ourselves. And since research articles on their own are unlikely to produce change, we invest in translating our work into digestible information for a broad array of program and policy audiences.

OUR RESEARCH

Our work focuses on addressing the health needs of children of all ages, from infants to young adults. We work on a wide array of research projects that coalesce into five portfolios:



Adolescent Health & Well-being

We're seeking to better understand adolescents' reproductive and sexual, mental, and special health care needs, including for vulnerable populations of teens.



Health Equity

We're investigating how policies and programs can improve the health and reduce disparities of marginalized children and adolescents.



Behavioral Health

We're seeking to ensure that children and families receive the behavioral health services they need to be their healthiest selves both physically and mentally.



Intergenerational Family Services

We're building evidence for sustainable, family-centered programs that better the health of children and their families.



Health Care Coverage, Access & Quality

We're investigating how the unique needs of children, adolescents and families can impact the delivery and quality of health care benefits and coverage they receive.

The strategic alignment of our work through these portfolios allows for collaboration across our diverse research teams on meaningful projects with the scope and expertise required to inform quality child and adolescent health policies at all levels.



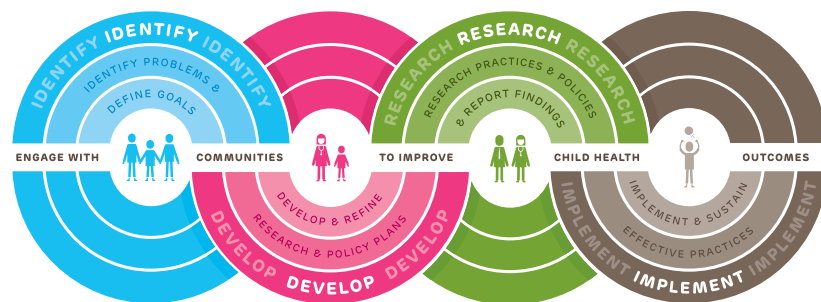
[VISIT POLICYLAB.CHOP.EDU/OUR-RESEARCH](https://www.chop.edu/our-research)

for more information on each of our projects.



OUR PROCESS

Our approach engages with communities to improve child, adolescent and family health. From the traditional public health epidemiological research we do to identify emerging trends in children's health issues to our work implementing innovative interventions in our communities and health care system, these four steps guide everything we do:



OUR RESOURCES

PolicyLab works to turn our high-quality, evidence-based research into actionable program and policy recommendations through:

- Policy Analyses & Briefs
- Population Needs Assessments
- Program Implementation & Evaluation
- Expert Testimony & Commentary

OUR PARTNERSHIPS

Our investigator-led research doesn't operate in a vacuum, but is informed by and responsive to partnerships with key stakeholders.

Some of our partnerships have included local, state and federal agencies and policymakers; peer research centers; advocacy groups; school districts; foundations; professional organizations; adult health care settings; other children's hospitals; and communities.



VISIT [POLICYP.LAB.CHOP.EDU/POLICY-TOOLS](https://policylab.chop.edu/policy-tools)

to find helpful resources for policymakers, program developers and other stakeholders.



OUR TEAM

PolicyLab's growing team of faculty and staff is led by Director David Rubin, MD, MSCE, and Scientific Director Meredith Matone, DrPH, MHS.

We have recruited an interdisciplinary composition of experts in medicine, public health, law, psychology, biostatistics, social work, health services research, program evaluation and population health. Across all of our disciplines, we value hiring and retaining a diverse group of team members from all backgrounds. Through this expertise and with the help of an experienced group of in-house policy and communications professionals, we are able to provide solutions from research and policy development through implementation of programs.



David Rubin, MD, MSCE
Director



Meredith Matone, DrPH, MHS
Scientific Director

CHILDREN'S HOSPITAL OF PHILADELPHIA RESEARCH INSTITUTE

Since its start in 1855 as the nation's first hospital devoted exclusively to caring for children, CHOP has been the birthplace for many dramatic firsts in pediatric medicine.

The hospital has fostered medical discoveries and innovations that have improved pediatric health care and saved countless children's lives. CHOP has a long and distinguished tradition of research that has spanned nearly a century. The research breakthroughs at CHOP have improved the lives of countless children throughout the world and

put the institution on the course to pediatric research preeminence. Today, the hospital's entire research enterprise is organized under the aegis of the CHOP Research Institute and constitutes a separate organizational, administrative and financial entity within the Hospital. PolicyLab is a Center of Emphasis within the CHOP Research Institute.

VISIT [POLICYPALAB.CHOP.EDU/ABOUT-US/EXPERTS](https://www.chop.edu/about-us/experts)

for more information about PolicyLab team members.



The mission of PolicyLab at Children's Hospital of Philadelphia (CHOP) is to achieve optimal child health and well-being by informing program and policy changes through interdisciplinary research. PolicyLab is a Center of Emphasis within the Children's Hospital of Philadelphia Research Institute, one of the largest pediatric research institutes in the country.

PolicyLab

Children's Hospital of Philadelphia
2716 South Street
Roberts Center for Pediatric Research,
10th Floor
Philadelphia, PA 19146

P 267-426-5300

F 267-426-0380

PolicyLab@email.chop.edu
policylab.chop.edu

 @PolicyLabCHOP